

TRENCAB SURFACE MOUNT STRIKE BRACKET

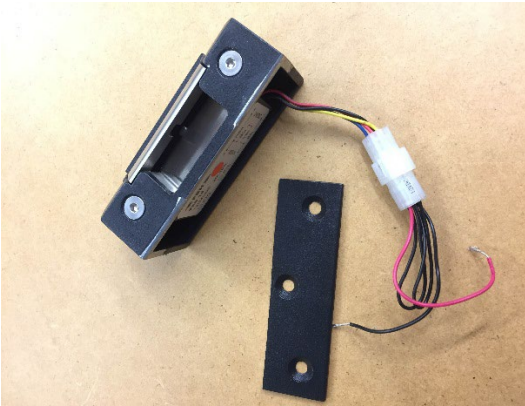
Part No – TSMB

The TSMB now makes it possible to install a **LOX LES15** surface mounted commercial quality non-monitored electric strike

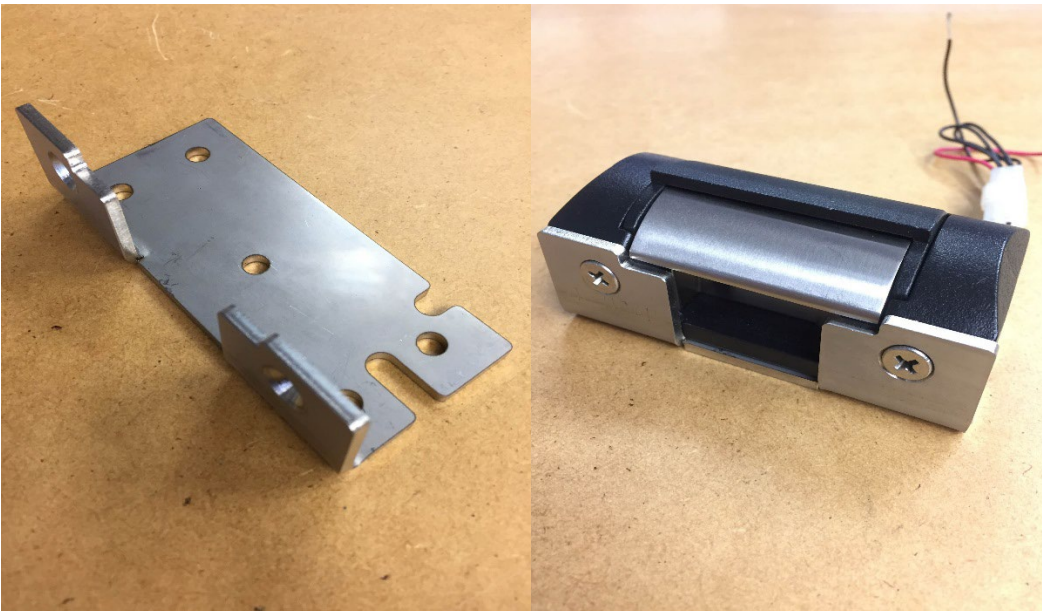
The TSMB allows the lock and electric strike to be installed centrally as the reduced 32mm throat opening allows the deadlocking trigger to activate and not fall inside the electric strike throat.

Simply remove the lip from the cast alloy electric strike housing with a hacksaw.

File a small radius to allow the electric strike plate to sit inside the TSMB.



Install the 3mm stainless steel TSMB onto the door frame. Then install the electric strike plate with the 2 x 5mm stainless steel screws provided. There are 2 x cable exit slots to suit different application.



Allow a minimum 3mm gap between your lock body and TSMB strike bracket.